

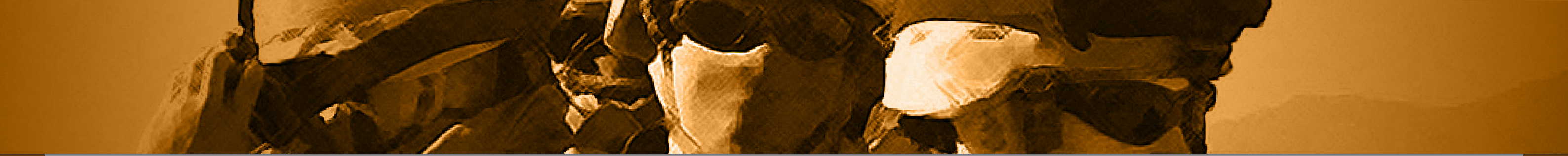
# GROUND *Equipment & Training* FORCES



**World Leader in Supplying  
Ground Forces Equipment and Training**







**E**stablished in 1990, our company specializes in the sales and distribution of defense systems and equipment to militaries and police forces around the world. We represent some of the most respected and well-established companies in the global defense and security industry.

Our staff members have extensive military backgrounds and have held many commands.

Our Company is a ONE STOP SHOP focused on meeting our clients' needs by providing a full-package deal:

- **Riot Control:** Supplying full range of products from gear for the riot-control officer to special items for entire units.
- **Counter & Anti-Terror / SWAT:** Supplying the most advanced Counter and Anti-Terror gear and training to SWAT teams worldwide.
- **NBC:** Supplying rings of exposure and identification devices for NBC as well as cleaning and treatment protection devices for dealing with dangerous materials.
- **Homeland Security:** Providing training, consulting and gear to protect maritime ports, airports, train stations, military bases, prisons and compounds.
- **K9 - Dogs:** Supplying attack, explosive and charge detection, drug detection, search and rescue dogs as well as training and gear.
- **Intelligence & Counter Measures:** Supplying various equipment, products and training for Intelligence & Counter measures, such as interception, jamming, tracking, observations, tapping and different electronics in the field
- **EOD & IED:** Supplying full package gear from the ballistic protection to the professional equipment. We also supply a diversified variety of services related to numerous ammunition related activities such as Ammunition Demilitarization, Demining & Area Clearance, etc.
- **Perimeter Defense:** Providing full turn-key projects as well as other Sophisticated Solutions such as an Electronic Perimeter Intrusion Detection Systems and other types of defense and safety measures.
- **Ballistics:** Manufacturing and supplying bulletproof plates, body armor, ballistic helmets, armored vehicles, special armoring and armored gear complying with the highest international standards.
- **Rappelling:** Providing Professional Equipment that was specially developed for the use of SWAT teams, Counter Terror and Special Forces around the world in Rescue missions and other Military applications.
- **Textiles:** Providing a wide range of high quality textile Products, from personal gear, through special tactical items to unit gear.
- **Defense Academy:** Providing consulting services and specialized security training of ALL TYPES, insuring that the quality of your knowhow will be as great as your equipment.

One of the most important parts of a strong and capable army is its Ground Forces. The Ground Forces take under it several corps and each is handling another aspect of the warfare. In most cases the GF are divided in to: Infantry, Armored, Field Intelligence, Engineering and Artillery.

The infantry for example are designed to secure hostile perimeters for the safety of the citizens, fight through open and urban areas while thriving to achieve dominance with as fewer casualties as possible, direct Tanks and mark ground targets for the Air Force. These are the exact soldiers that look straight at the enemy's eyes.

Our extensive background, both on the operational aspect as well as rich experience in providing training and supplying the best line of equipment for the Ground Forces, enables us to take part in the design and development of advanced tactical equipment designated for the operational needs of the different GF corps.

Collaboration and long-years relationships with Armies throughout the world continuously contribute to our ability to offer state-of-the-art tactical equipment to our clients. In addition, our military training division personnel are assembled from operational units and are highly experienced in military training and have knowledge in a wide range of tactical situations such as - CQB, open area warfare (desert, maritime, jungle), urban combat etc.

TAR also provides strategic consultation on different issues related to Ground Forces.





# TRANSPORTATION



## WHEELED APC GB0401

Fully armoured body.  
4X4 Automatic.  
Carries up to 12 soldiers.  
Various modular options for different needs.  
Roof turret, 4 side doors with observation windows  
and shooting slots.



## TRANSPORT HELICOPTER GB0501

## 4X4 COMBAT JEEP GB0402

4x4 Combat Jeep for 6-8 passengers.  
Carries up to 750kg on off-road area.  
Short type: 4.150m.  
Long type: 4.492m.  
Chassis: made of closed profile rectangle.  
Can be supplied with ballistic protection.



## ARMY ATV GB0502

This Army ATV can tackle the toughest jobs. It is lightweighted, has a low center of gravity and up to 14.5" of ground clearance. Designed for many years of hard driving without serious upkeep costs.



Gun Turret



## TRACKED APC GB0403

Carries a crew of 2 plus 10 fully equipped soldiers. Fitted with external vision.  
Body type: APC.

## 4X4 APC GB0503

Protection level B6  
14 persons (13 + driver).  
Entire vehicle cab and passenger compartment are made of advanced double-hulled ballistic steel armour construction, providing extreme protection against a wide variety of ballistic and explosive threats.  
Optional:  
• Gun turret systems  
• Firing ports.





# TENTS

## **SQUAD TENT GB0601**

12 Soldiers, easy to assemble.  
Made for military deployments; waterproof.



## **RIDGE TENT GB0701**

4-Soldiers. Waterproof.



## **HALF TENT GB0702**

2-Soldiers. Waterproof.



## **FAST-OPEN TENT GB0602**

For immediate  
deployment in any  
emergency. Waterproof  
and easy to assemble  
and disassemble.



## **MODULAR DIVISION TENT GB0603**

Multi-purpose tent that can be used as a  
storage, hospital, command tent and more.  
For use in extreme weather conditions.  
This model is supplied complete with  
all accessories: poles, pegs, guy ropes,  
hammer, tent bag and repair kit.



## **PLATOON TENT GB0703**

Military Platoon Tent is made for  
extreme weather conditions;  
Waterproof and hard winds.  
Dimensions: 18mx8m  
Capacity: 15 to 30 persons  
Ground Sheet: on demand





## BUNK-BED GB0801

Designed to be assembled in seconds, by one person.



## MILITARY BLANKET GB0802



## EXTREME WEATHER SLEEPING BAG GB0803

Lightweight low pack size,  
Waterproof nylon outer & hood.



## FIELD MESS GB0901



## NYLON TOILET TENT GB0902



## FUEL TANK GB0903

20 Liter.



## ENTRENCHING TOOL GB0906



## FIELD FOLDING BED GB0804



## SHOWERS PLATFORM GB0805

A modular sanitary system. It is mounted on a platform which can be transported by means of a forklift.



## FIELD CHAIR GB0904



## FIELD TABLE GB0905



## FOLDING BENCH GB0806



## PERSONAL ROPE GB0907



## WATER TANK TRAILER GB0807

Capacity: 200L, 300L or 500L.



## MOBILE REFRIGERATOR GB0808

Can easily exceed 12 hours in an ambient temperature of +32°C.



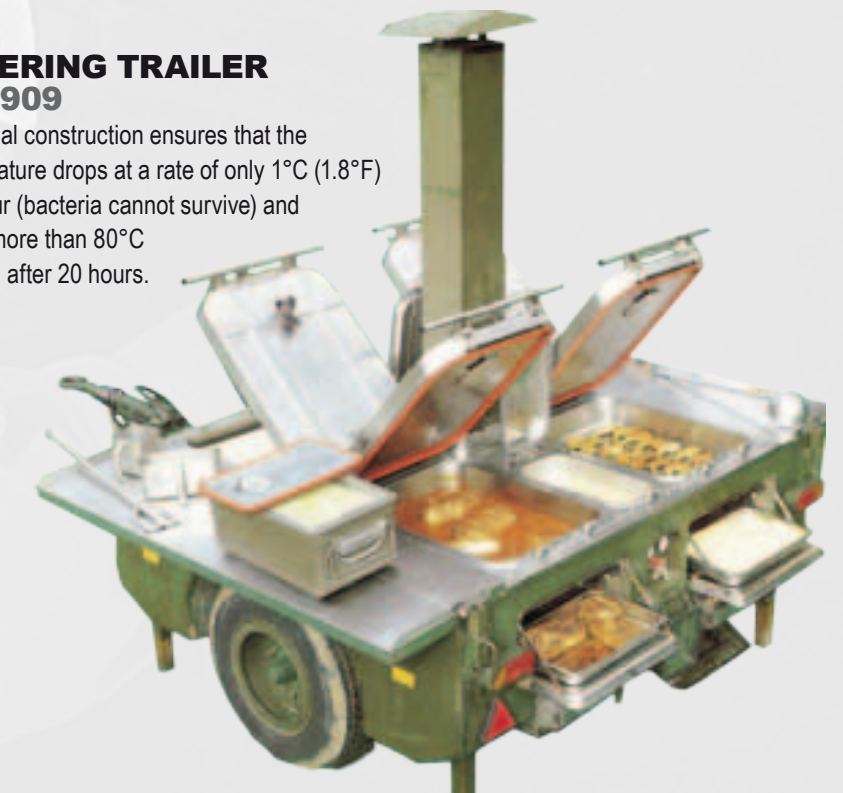
## SINK SYSTEM GB0908

6 faucets each drinking fountain and 6 mirrors.  
Cold/Hot water.



## CATERING TRAILER GB0909

A special construction ensures that the temperature drops at a rate of only 1°C (1.8°F) per hour (bacteria cannot survive) and is still more than 80°C (176°F) after 20 hours.





# WEAPONS

## LIGHT MACHINE-GUN GB1001

5.56mm or 7.62mm Light Machine-Gun.



## GALIL GB1002

Assault rifle 5.56x45.



## AK47 GB1004

Assault rifle 7.62x39.



## M16 GB1003

Assault rifle 5.56x45.  
Different stock & barrel length options, for  
Infantry, SWAT & Special Forces.



## M16 M203 GRENADE LAUNCHER GB1005

Complete range of 40mm high explosive  
and special purpose ammunition.



## 9MM PISTOL GB1006

9mm double action pistol.  
Available in 3 Cal.:  
9mm, 40 S&W, 45 ACP.



## 40MM GRENADE BELT-FED LAUNCHER GB1101

40x53mm ammunition.  
Maximum distance: 2,212m.  
Effective range: 1,500m.  
Can fire from a tripod mounted  
position or from a vehicle mount.



## R.P.G GB1102

40mm caliber.  
Weights between 2.5 and 4.5kg (Explosives).  
Sets the maximum range, usually 920m.



## ROCKET LAUNCHER GB1103

Light Anti-Tank Weapon is a portable  
one-shot 66mm caliber.



## MORTAR GB1104

Available: 52mm, 60mm, 81mm, 120mm.



## SHOTGUN 12ga GB1105

Pump action shotguns specially  
designed for Infantry units  
and Police forces.





# AMMUNITION

## 5.56X45 GB1201

Types: Ball, Tracer, Blank, Dummy, Non-Bullet, M193 / SS109.



## 7.62X39 GB1202

Ammunition for AK47.



## 40mm LINKED GRENADES GB1301

Caliber: 40mm x 53mm linked Ammunition.



## MORTAR BOMB GB1302

HE / NT / Illumination (infrared or visible illumination).  
Available: 52, 60, 81 and 120mm.



## 9x19 GB1203

For pistols & sub-machines  
115g, 125g.



## 0.50 CAL GB1204

Long range ammunition



## FLASH BANG GB1303

Designed to create a distracting/  
disorienting effect in combat field  
situations or during tactical entry.



## SMOKE/CS GRENADE GB1304

Discharge time of approximately  
25 seconds.



## FIELD FLARES GB1205

Ground forces may deploy the Field  
Flares for aerial or ground signalling to  
indicate the correct area for releasing  
ordnance, deploying paratroopers, or  
landing an aircraft.



## 12ga BREACHING GB1206

Copper top 2-3/4" 750 grain. Copper/S-70 steel.  
Frangible 12ga shotgun slug.  
Use for class 3 heavy steel doors.  
Defeats: class 3 doors, locks & hinges.

## M203 GRENADE GB1305

40x46 low-velocity round. HE,  
HEDP, NT, Illumination.



## FRAGMENTATION HAND GRENADE GB1306

Effective range: 5-12m.



## ILLUMINATION ROCKET GB1207

Manual illumination rocket, 1000m radius.





# SNIPING

## SNIPER RIFLE GB1401

Manually operated, Bolt action.  
Caliber: 7.62mm x 51 NATO (.308Win).



## GALIL SEMI-AUTOMATIC GB1402

Caliber: 7.62mm x 51 NATO.



## SNIPER RIFLE 338 GB1403

a long-range high-precision rifle. Intended for the trained marksman, this weapon is designed to shoot targets at up to 1200 m and beyond. The precision and repeatability of this system ensures that the target is hit on the first attempt, while the power of the calibre ensures maximum effectiveness even in light anti-materiel targets.  
Caliber: 0.338



## LONG-RANGE SNIPER RIFLE GB1404

Tactical Rifle – 50 caliber.



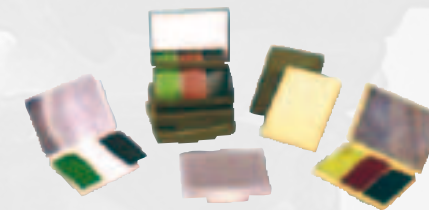
## RANGEFINDER GB1501

Provides instant distance and speed (SPD modification) measurements consistently and accurately  
Measuring range: 20-1,200m.



## CAMOUFLAGE FACE PAINT GB1502

Versatile usage, no drying time required.



## GHILLIE SUIT GB1503

Camouflage Sniper suit.



## SNIPER MANAGEMENT SYSTEM GB1504



## SPOTTING SCOPES GB1505

Fully coated optics – Exclusive multi-position eyepiece with infinite number of positions.



## POCKET WIND METER GB1506



## SNIPER MATTRESS GB1507



## ROCKY CAMOUFLAGE SUIT GB1508

Special material, lightweight, breathable, durable, fire retardant, and water repellent.





## LONG-RANGE BINOCULARS GB1601

The 20x80 puts you at an effective distance of less than 100 yards from one mile-distant targets or other objects. Tough, waterproof, shock resistant and rubber armoured. Tripod mount is included, but these models are light enough to be hand held.



## OBSERVATION BINOCULARS GB1603

Designed for long-range.



## STABILIZER BINOCULAR GB1605

The Stabilizer Binocular and optional Eye-Link field agents can easily view, record, and/or transmit real time video of people and events from any mobile platform. Can become a night vision unit.



## COMPASS BINOCULARS GB1602

A range finding reticule combined with an electronically illuminated, HD-stabilized compass. Gives the highest light gathering ability of any compass binocular.



## BINOCULARS GB1604

7x50 Binoculars with instant focus.



## TACTICAL BINOCULARS GB1606

8x40 Binoculars with instant focus.



## NIGHT VISION GOGGLES GB1701

- High resolution imaging
- Compact, light weight and durable housing
- Head/helmet mountable for hands free usage
- "Fused" image for enhanced night vision observation
- Waterproof



## NIGHT VISION BINOCULAR GB1703

Compact, lightweight dual Night Vision Goggle System



## OBSERVATION SYSTEM GB1704

The system is comprised of three main components: Observation head: Day camera, Night thermal camera (wide selection of cameras), Laser marker – option.



## THERMAL MONOCULAR GB1702

A compact dual purpose thermal imaging weapon sight and monocular. Built around state of the art un-cooled thermal imaging technology, highly integrated DSP-based electronics and a compact, light weight system.



## NIGHT VISION MONOCULAR GB1705

Hand-held, head-mounted for hands free usage. Weapon mounted. The integrated IR illuminator enhances the ability of the user to read maps and operate in confined, zero light areas.



## PERSONAL THERMAL BINOCULARS SYSTEM GB1706

Lightweight. Features 3 fields of long-range view.







**RED DOT REFLEX SIGHT  
GB1801**

A red dot reflex sights based on the state-of-the-art concept of combining an innovative, high-precision reflex sight with a single or dual-wavelength laser pointer (visible-red and/or IR) for a 'round-the-clock operational response.

**DAY & NIGHT CAPABLE REFLEX SIGHT  
GB1802**

Battle proven product with a unique design that makes it a perfect day and night-capable solution for infantry and special operations missions.



**THERMAL SIGHT  
GB1901**

Allows users to identify the heat signatures of individuals or objects; day or night and in rain, fog and smoke. Can be used in complete darkness or broad daylight. A video output port allows the image to be displayed on an external video monitor or recorded by video recorder.



**NIGHT VISION WEAPON SCOPE X6  
GB1902**

Provide exceptional quality image resolution under varying light conditions



**RIFLE SIGHT  
GB1803**

Tube Dia.: 30mm  
Power/Obj. lens (mm): 3X32  
Waterproof: 0.5 m water, 30 min



**DAYTIME TACTICAL OPTICAL SIGHT  
GB1804**

Lightweight and rugged 3x Optical Sight designed for modern Military and Security Applications.



**GRENADE LAUNCHER SIGHT  
GB1805**

M203 (40x46) weapon sight.



**MONOCULAR NIGHT SIGHT  
GB1903**

3X magnification.



**MONOCULAR NIGHT SIGHT  
GB1904**

Night Vision Weapon Sight that provides excellent observation, target acquisition and aiming capabilities



**TARGET ACQUISITION AND FIRE CONTROL SYSTEM  
GB1806**

Designed to substantially improve first-hit probability. The system's high-precision fire control supports system ballistic compensation. Calculations, based on range, type of ammunition and other factors, are translated into a displayed "floating reticle" that instantly becomes the aiming dot.



**NIGHT VISION WEAPON SCOPE X4  
GB1905**

All type of weapon mounts is available



**NIGHT VISION SIGHT  
GB1906**

High-resolution night vision add-on attachment that represents the latest developments in tactical night vision weapon sight technology.





# Attack Dogs

Our Attack dogs are trained to work in different kind of terrain such as buildings, boats, buses, planes, etc. Some of them are dressed to attack any human being present in a searching area and others are trained to attack only the dominant persons (such as hostage taker, terrorist, etc.) in a group of people (following customers' request). Our dogs are also trained to mark people who are unreachable for them, and so, to protect their handler from any potential threat.

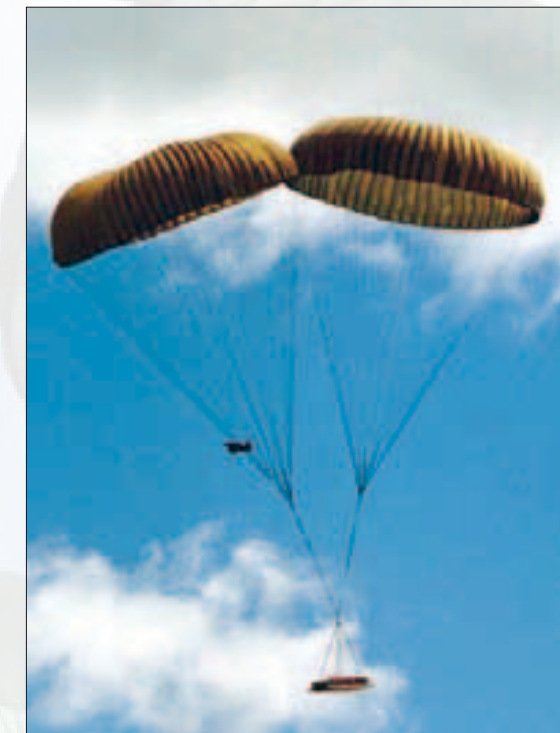
# K9



# PARACHUTING

## PARACHUTE GB2101

The Canopy is a steerable, 35-foot diameter parabolic shaped canopy, with anti-inversion netting. Its' 30 gores are block constructed using nonporous, high UV resistant, rip-stop nylon. Very little air passes through the material, resulting in slower-than-normal rate of descent and consequently softer landings, especially welcomed at higher field elevations or with heavy payloads.



## CARGO PARACHUTE GB2102

The cargo parachute is capable of supporting up to 2,200 lbs in the delivery of non-fragile equipment and supplies using a high-velocity air delivery method. The cargo parachute consists of a canopy with suspension lines, a nylon-webbing static line and a deployment bag.

## RESERVE PARACHUTE CANOPY GB2103

Reserve emergency parachute for maximum load up to 230lbs. (suggested pilot weight up to 160lbs.) Pull Down Apex. Folded in deployment bag without handle.





## DUFFLE BAG GB2201

Top loading duffle bag with snap hook closure.



## BACKPACK GB2203

Fully adjustable to fit different sized objects.



## PERSONAL BAG GB2205



## A.L.I.C.E FRAME GB2202

Adjusted directly on the back for an easy fit and is adjustable to work with armour. Positive lock on your hips. Pack Lid works with a reservoir and becomes a daypack on its own. Has access through pack bag side zippers.



## TACTICAL CASE GB2204

Totally watertight, crushproof, and dust proof, Open cell core with solid wall design, strong, lightweight, Pressure Equalization Valve, O-ring seal, Fold down handles, Strong polyurethane wheels with stainless steel bearings and stainless steel hardware.



## EQUIPPING BAG GB2206

Designed to carry infantry gear and includes a separate helmet storage area. Quality construction consists of 1000 denier, water resistant Cordura nylon, heavy-duty zippers and removable nylon web shoulder strap.



## 1.5L RESERVOIR GB2301



## 2L RESERVOIR GB2304



## 3L RESERVOIR WITH STORAGE GB2307



## 1L PLASTIC CANTEEN WITH COVER GB2302



## 2L PLASTIC CANTEEN WITH COVER GB2305



## 10L/20L JERRY CANS GB2306

Available in 10L/20L and various colours.



## 25L RESERVOIR GB2303



## BACKPACK WITH RESERVOIR GB2308

Can be loaded up with 200L of gear and up to 3L water.





# UNIFORMS



## WORKING BELT GB2403

Military belt, easy to use and adjustable. One size fits all. Available in various colours.



## BELT WITH METAL BUCKLE GB2404



## CHAMELEON UNIFORMS GB2501

Chameleon Uniforms is a single camouflage pattern designed to help the wearer hide in varied environments, seasons, elevations and light conditions. It was designed to address the real-world need for concealment in different environments, with one basic kit of gear.





**BERET**  
GB2601



**NOMEX® MASK**  
GB2602



**KEVLAR® MASK**  
GB2603



**EXTREME WEATHER CAP**  
GB2604

Adjustable and snug fits to the head. Insulated to keep the head warm in the coldest temperatures.



**HELMET COVER**  
GB2605



**BOONIE HAT**  
GB2606

Made according to Mil. specs. comes with chin strap. Protects the face and the nape area from the sun.



**ARMY CAP**  
GB2607

Protects the face and the crown from the sun. Available in various colours & sizes.



**TOWELS**  
GB2701

100% Cotton available.



**THERMAL UNDERSHIRT**  
GB2703

Total versatility, total performance through high exertion in cold conditions. Ultra-lightweight insulating layer engineered for core temperature consistency.



**SPORT SHORTS**  
GB2704

Made of Nylon® with inner lining. Available in various colours.



**LONG UNDERWEAR**  
GB2706

Maximum thermal regulation, from waist to ankle. Brushed Cold Gear fabric and a performance waistband enhance comfort. Designed with a working fly for full functionality.

**T-SHIRT**  
GB2702

Lightweight and comfortable. 100% Cotton available.



**UNDERWEAR**  
GB2705

Low rise, seamless construction provides an abrasion-free fit.



**WOOL SOCKS**  
GB2707





## **PADDED COVERALL GB2801**

Protects against harsh weather.  
Maintains body temperatures.



## **UNDER-THE-HELMET COVER GB2802**

Keeps the soldiers' head & ears warm.  
Adjustable & comfortable.



## **COLD WEATHER PULL-OVER GB2804**

Made of wool, comfortable and warm.  
Can be worn over the uniforms.



## **NYLON PONCHO GB2805**

Attached hood.  
Poncho liner available.



## **STORM SUIT GB2803**

For extreme weather.  
Rainproof.



## **FLEECE JACKET GB2806**

A wind resistant Fleece Coat.  
Maintains the body temperature  
in bad field condition, while  
maintaining mobility.



## **OVER-BOOT COVER GB2807**

Over-the boot cold weather  
protection. Ideal for cold  
weather sedentary activities.



## **COLD WEATHER GLOVES GB2901**

Wind and water resistant work  
glove. Military Application:  
Handling weapons, general  
field or mechanical work in  
cold/wet conditions.



## **IMPACT GLOVES GB2903**

Fast roping glove suitable  
for most combat operations.  
Military Application: Pilots  
and crew chiefs, fast roping,  
rappelling, hoist operations,  
handling weapons, tanks,  
gunnery, CQB, SWAT.



## **NOMEX® GLOVES GB2905**

Constructed with a 100% Nomex®.  
Black, OD and Desert.



## **COMBAT MILITARY BOOTS GB2907**

Maximum compatibility to field condition.



## **COMBAT GLOVES GB2902**

Military Application: Most  
Combat Operations that require  
maximum finger dexterity,  
including handling weapons,  
tanks, gunnery, CQB, SWAT.



## **FLIGHT GLOVES GB2904**

High-performance glove  
designed like standard "flight  
glove". Military Application:  
Pilots and crew chiefs, tanks,  
gunnery, special operations,  
SWAT, CQB.



## **REINFORCED GLOVES GB2906**

Patent-pending knuckle protection  
without compromising dexterity or  
finger control



## **DESERT BOOTS GB2908**

Hot weather desert boots, padded and  
made for the desert extreme weather.





# PERSONAL GEAR

## TACTICAL GOGGLES GB3001

Filtration system that minimizes lens fogging and filters airborne particles, dust, and splashes. The durable, smooth frame is easy to clean and conforms to any face shape.



## VENTILATED GOGGLES GB3003

Goggles with 2-speed fan utilizes micro-rotor technology to eliminate fogging in only seconds. The fan runs on low "stealth" speed for up to 50 hours on 1 AA battery (included). Designed for Infantry, SWAT and Special Forces.



## "FLY-EYES" GOGGLES GB3006

Tactical eye wear with ballistic lenses.



## SHOOTING GLASSES GB3008

A unique combination of high-impact resistance, unrestricted field of view, and interchangeable lenses for effective eye protection in any light condition.



## NBC MASK GB3002

Head harness type mask with lightweight canister: Total field of vision: 75% Total weight: 800g.



## PROTECTIVE EARPHONES GB3004

Protects from heavy noise.



## MILITARY COMPASS GB3009



## EAR PLUGS GB3005

## COMBAT KNIFE GB3007



## KNEE PADS GB3101

Designed for high-intensity Infantry units. One size fits all.



## ELBOW PADS GB3103

One size fits all.



## ADVANCED KNEE PADS GB3104

Hybrid construction which combines high and low density materials to deliver maximum "cush", while the contoured ergonomic shape offers superior knee pad support.



## CLIP-ON KNEE PADS GB3102

Special Operations Heavy Duty Clip-On Kneepads are clipped onto your field pants, then the Clip-Locks over the clip to lock them down. Velcro back to the kneepads for a long lasting comfortable fit



## NEOPRENE KNEE PADS GB3105

Extremely flexible and fit Comfortably under or over clothing, making them ideal for long-term wear.





## VEHICLE IED JAMMER GB3201

IED Jammer is a battle proven, modular wireless communication Jammer. Consisting multiple transmission frequency bands and high transmission power, the VHP ECM bomb Jammer is used for force protection.



## RADIO SYSTEM GB3203

Lightweight receiver-transmitter unit. Covers the 1.5 to 30 MHz band with 285,000 channels. It applies such features as digital squelch and selective calling.



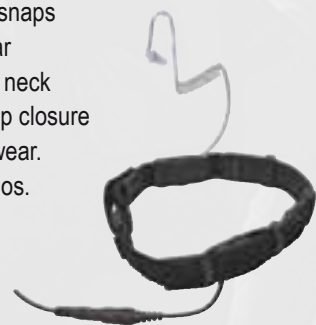
## ARMY HEADSET GB3204

Swivel earpiece is attached to the helmet clip. Noise cancelling, attaches to the helmet chin strap. Waterproof PTT button capsule includes steel cap.



## THROAT MICROPHONE GB3205

Speaker is sealed and snaps onto audio tube for clear reception. Comfortable neck band with hook and loop closure for easy use and long wear. Available for 2-way radios.



## PORTABLE IED JAMMER GB3202

Programmable Backpack IED Jammer. A lightweight backpack portable bomb Jammer. designed for military forces and ground troops under risk of coming across remote controlled improvised explosive devices, also known as RC-IEDs or IEDs.



## COVERT HEADSET GB3206

Unique in its' performance, water resistance, lightweight.



## PARAMEDIC FIELD BAG GB3301

A professional bag, which fulfils the needs of even the most advanced Paramedic. Adjustable for all medical field needs.



## PERSONAL TRAUMA BANDAGE GB3304

Packed in vacuum. Can absorb 550cc liquid.



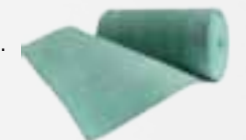
## MEDIC FIRST AID KIT GB3306

Includes different kinds of medicine, bandages and various aids.



## ARTERIAL TOURNIQUET GB3302

200x7cm length. Used for blocking veins. Made of flexible silicon.



## STRETCHER GB3303



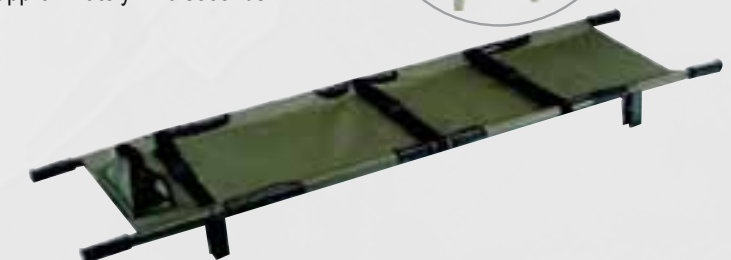
## EMERGENCY BLANKET GB3305

Used when cold weather poses a threat, can provide essential warmth; treating and preventing the onset of Hypothermia. Reflecting almost all radiated body heat produced back to the patient.



## COMPACT FOLDING STRETCHER GB3307

8 fold stretcher, lightweight and flexible. Easily stored in facilities, vehicles and helicopters. Easy to use - folding and extending it in approximately 7-10 seconds.





# VESTS & BALLISTICS



## BALLISTIC HELMET GB3401

A conforming to level IIIA, with high performance, Low weight and improved comfort factor. The helmets are designed to provide the protection against ballistic and fragmentation threats, by covering optimum area of the head. And their ergonomically design has ideal distribution of mass over the head centerline.



## BALLISTIC HELMET WITH VISOR GB3402



## TACTICAL VEST WITH 3L RESERVOIR GB3403

Combines revolutionary design, fully integrated hands-free hydration, rugged pouches and ergonomic comfort. Available in Black & Foliage Green.



## MULTI PURPOSE TACTICAL VEST GB3404

Designed for Special Infantry and SWAT teams. Lightweight and designed to carry different types of accessories. One size fits all.



## COMBAT VEST GB3501

The vest is made of 2 separate parts (front, back), this structure enable to insert ballistic plates into each part for maximum protection to the user



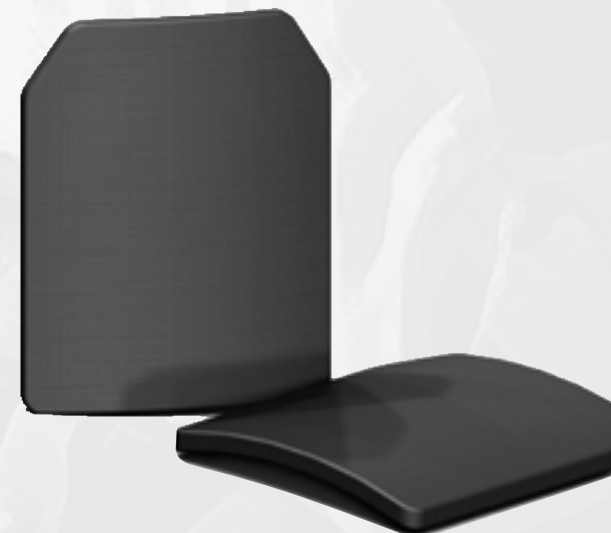
## PROTECTIVE VEST GB3502

Classic model designed to answer the basic needs of every soldier. The vest comes with magazine pouches and provides protection for the upper body.



## CERAMIC BP PLATES GB3503

Multi-hit Ballistic Plates. Meets NIJ level III and level IV. Available in different shapes and sizes.



## PE LIGHTWEIGHT BP PLATES GB3504

Multi-hit Ballistic Plates. Meets NIJ level III and level IV. Available in different shapes and sizes.





# ILLUMINATION

## LIGHT STICKS GB3601

Chemical light.  
Red, Blue, Yellow, Green and IR.



## MULTI LIGHT GB3603

Metal Halide light output is five times more powerful than equivalent traditional halogen lighting. Producing over 100,000lm of perfect white light.



## ILLUMINATION TROLLEY GB3604

Houses all four of its light heads and its multi-stage charger for that total self contained convenience, it is also equipped with a telescopic handle and rugged wheels for ease of transport



## TACTICAL HID SEARCHLIGHT GB3602

40-watt HID portable spotlight without Handle (straight-body). Can produce an incredible light output of white light 4,000lm.



## POCKET FLASHLIGHT GB3605



## ILLUMINATION TERMINAL WITH GENERATOR GB3606

Capable of lighting a 2000-5000sqm with illumination output of 10,000Lm. The trailer is equipped with a powerful diesel engine for long operation and a 4.5m pneumatic telescopic mast.



## PERSONAL IR MARKER TL5

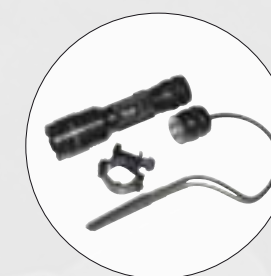
Compact and Lightweight Dual-Mode Marker. Worlds most advanced Personal Marker that enables the user to maintain high visibility, according to the mission and need, with an optional IR illumination for night-vision Friend-or-Foe identification. 2-color combination to choose: Blue-Red-White-IR. 2 levels of light emission, to allow low signature in urban terrains and high signature in open field. Battery status indication provided by a hidden LED. No-look-operation – buttons uniquely separated by vibration and shape \ texture Special Clip-mount and Designated Helmet-mount

TL5 mounted on helmet



## TACTICAL FLASHLIGHT TL6

This is a tactical flashlight with lightweight construction. It has High efficiency xenon bulb. Optional: IR Filter.  
Material: Aluminum 6061-T6  
Finishing: Anodizing, with hardness HRC19-25  
Bulb Type: Xenon  
Battery Type: 2pcs CR123A Lithium Batteries  
Water Resistant  
The end button switch can be exchanged to wire a remote switch





# WEAPON ACCESSORIES

**PICATINNY RAIL**  
GB3801



**FLASHLIGHT/  
LASER MOUNT**  
GB3802



**100 ROUNDS MAGAZINE**  
GB3901  
100 rounds capacity magazine.



**TACTICAL FOREGRIP-BIPOD**  
GB3902  
Transforms from foregrip to full function bipod with the push of a button.



**M16 HAND-GUARD**  
GB3803

- 4 sided Picatinny rail system.
- No gunsmithing required.
- Allows users to customize their gun with equipment for a specific mission.



**TACTICAL GRIP**  
GB3804

M-16 Grip



AK-47 Grip



**MP5 RAIL SYSTEM**  
GB3903



**GLOCK TACTICAL STOCK**  
GB3904



**HANDGRIP AND A  
FLASHLIGHT MOUNT**  
GB3805

Three in one: special handgrip and a flashlight mount with a built in trigger that transform tactical light into a Vertical Fore grip Weapon Lights



**HAND GUN HOLSTER**  
GB3806

Available for all kinds of guns and can be worn on thigh, belt & vest.



**M4 STOCK**  
GB3905



**QUICK RELEASE  
ERGONOMIC  
VERTICAL  
FOREGRIP**  
GB3906



**FIREARM TACTICAL  
VERTICAL GRIP**  
GB3907

Transforms from foregrip to full function bipod with the push of a button.



**BIPOD**  
GB3807



**MAGAZINE WELL GRIP  
FOR AR15/ M16/M4**  
GB3808

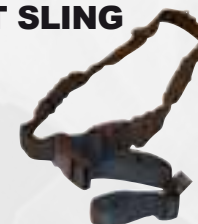
Transform your existing magwell onto a fast action magwell and ergonomic grip.



**WEAPON  
CLEANING KIT**  
GB3809



**TACTICAL  
ASSAULT SLING**  
GB3908



**SILENCER**  
GB3909



**SECURING LANYARD**  
GB3910

